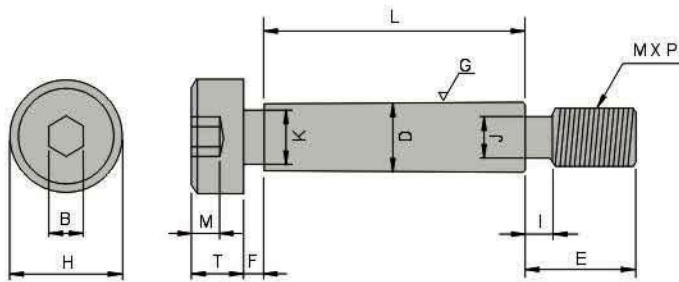


STRIPPER BOLTS-MALE SCREW TYPE



GMSB



M SCM435

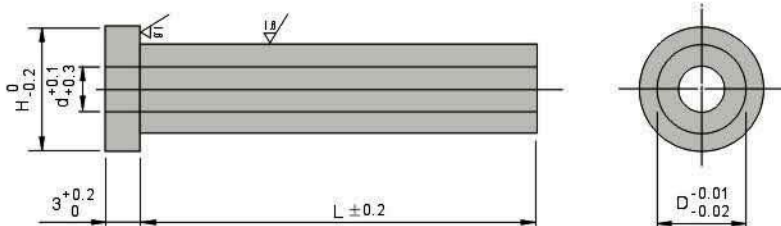
mm

$D_{-0.02}^0$	H	E	T	B	M	K	J	F	I	MXP
6	10	9.75	4.5	3	2.4	5.62	3.7	1.85	2.4	5XP0.8
8	13	11.25	5.5	4	3.3	7.62	4.43	1.85	2.6	6XP1.0
10	16	13.25	7.0	5	4.1	9.62	6.06	1.85	3.0	8XP1.25
12	18	16.25	8.0	6	4.9	11.62	7.72	1.85	3.0	10XP1.5
16	24	18.25	10.0	8	6.2	15.62	9.38	1.85	4.0	12XP1.75

Type No.		L																							
Type	D	12	16	20	25	30	35	40	45	50	55	60	65	70	75	80	85	90	100	110	120	130	140	150	
GMSB	6	5.7	6	6.3	6.9	7.5	8	8.6	9.2	9.8	10	11	11	12	12	13	13	14	15						
	8	6.7	7	7.5	8	8.5	9.2	9.8	10	11	12	12	13	13	14	14	15	16	16	19	22	23	27	29	
	10	9.8	10	10	10	11	11	12	12	13	14	14	15	16	16	17	17	18	18	22	22	25	28	30	
	12	14	14	14	14	14	15	15	16	17	17	18	18	19	20	20	21	21	22	24	27	29	32	35	
	16		24	24	24	25	26	27	28	29	30	31	32	33	34	35	36	37	39	42	45	47	50	52	

Order: GMSB - D - L - QTY

SPOOL RETAINERS



GMSO



M SCM415
H HRC45°~

mm

Type No.		D	H	L												
Type	d			25	30	35	40	45	50	55	60	65	70	80	90	100
GMSO	6	9	13	11	13	12	13	14	15	16	17	18	19	20	21	25
	8	11	16	13	15	14	15	16	17	18	19	20	21	22	23	26
	10	13	18	15	16	16	17	18	19	20	21	22	25	26	27	30

Order: GMSO - D - L - QTY