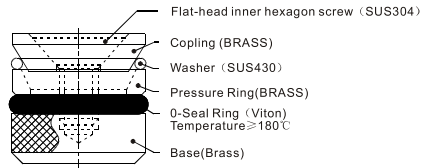
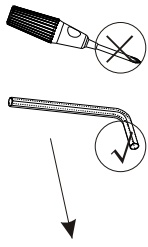


Cooling Circuit Plugs



| Code | Outer (ϕ)+0-0.1 | Length (mm) | Wrench (mm) | Volt Stainless | Proper Torque (kgf/cm) |
|--------------|---------------------------|----------------|----------------|----------------|---------------------------|
| DTW06 | 6 | 11.0 | 2 | M2.5 | 12~13 |
| DTW08 | 8 | 11.0 | 2.5 | M3.0 | 21~22 |
| DTW09 | 9 | 11.0 | 3 | M4.0 | 34~35 |
| DTW10 | 10 | 11.0 | 3 | M4.0 | 34~35 |
| DTW12 | 12 | 11.0 | 3 | M4.0 | 34~35 |

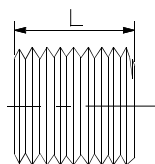
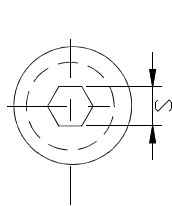
Code × QTY
DTW06 × 100PCS



Feature:

- 1.Flat-head inner hexagon screws instead the flat-heat cross-screw to increase the required installation and disassembly force.
- 2.The base with the embossing are useful for avoid revolving when the cooling plugs be installed or disassembled.
- 3.The interface between the O-ring and the base is also treating with embossing process. It is processed to avoid revolving when them hold down.

Brass Pressure Plugs



| Code | Nominal Size 1 (standard) | Nominal Size 2 (special) | L | S |
|----------------|------------------------------|-----------------------------|------|------|
| BBP-10 | 1/8 NPT | 1/8 BSPT | .250 | 3/16 |
| BBP-20 | 1/4 NPT | 1/4 BSPT | .406 | 1/4 |
| BBP-40 | 3/8 NPT | 3/8 BSPT | .406 | 5/16 |
| BBP-60 | 1/2 NPT | 1/2 BSPT | .531 | 3/8 |
| BBP-100 | 3/4 NPT | 3/4 BSPT | .531 | 9/16 |
| BBP-140 | 1 NPT | 1 BSPT | .656 | 5/8 |

Code / NPT × QTY
BBP-10 / NPT × 100PCS